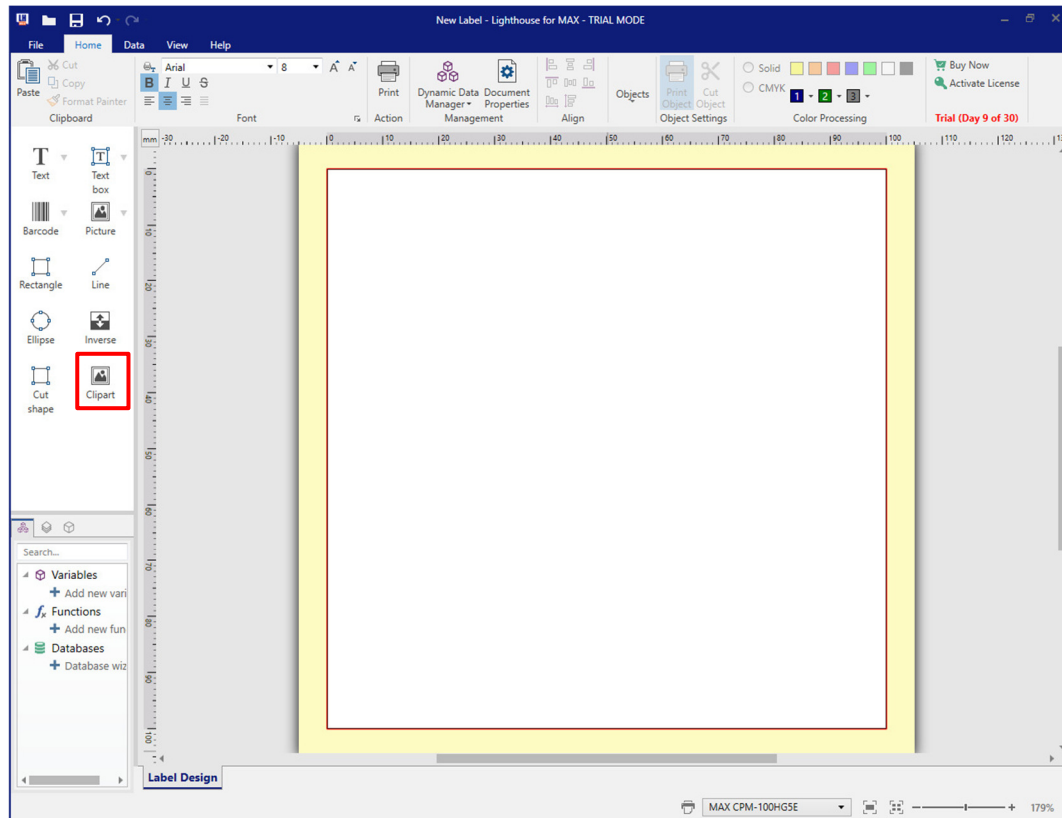


## Inserting Clipart & Own Graphics

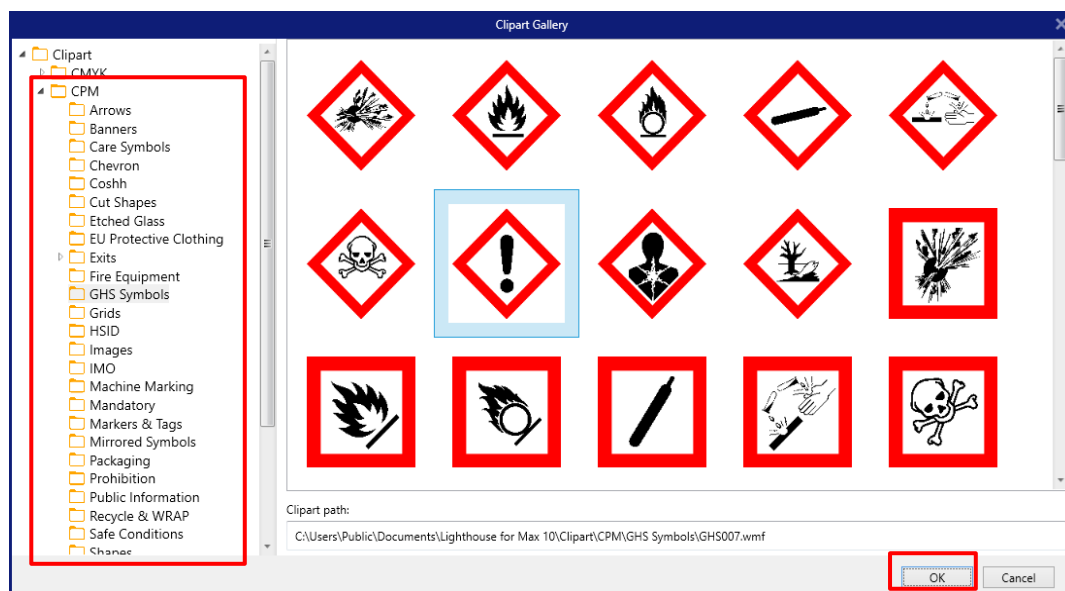
The software has a built-in library of clipart images ready to use in your labels and printing.

To insert an image from the clipart gallery, click on Clipart on the left-hand toolbar and then click onto your label.



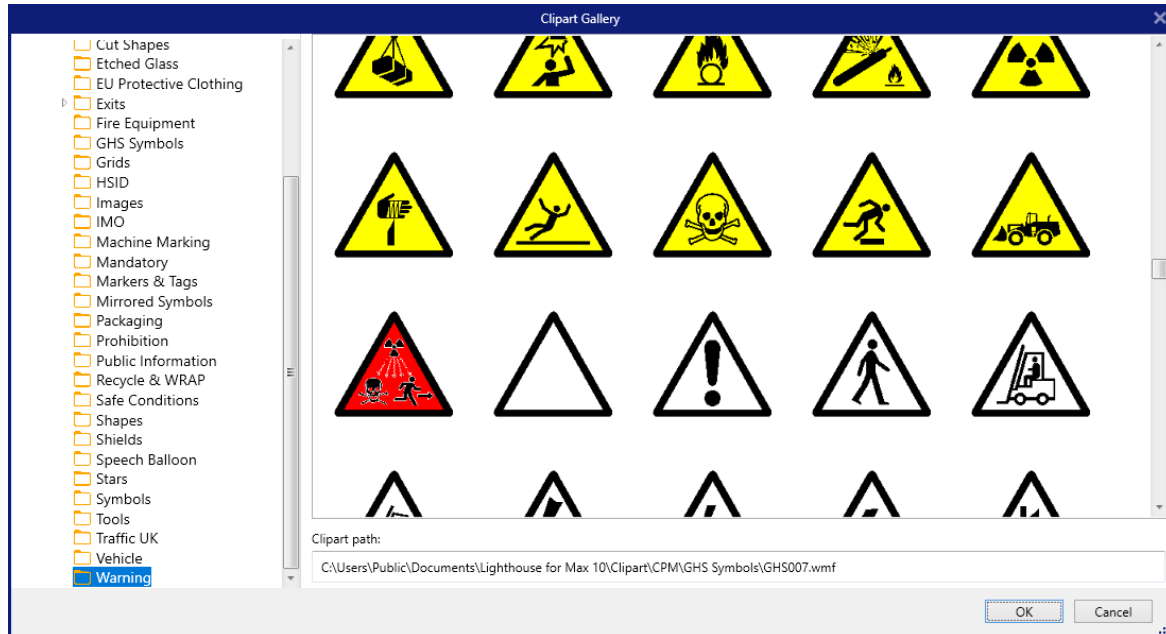
The gallery window will then open, click on the dropdown arrow to the side of CPM and multiple categories of images will be available to choose from.

Click on your chosen category and the images will appear in the window to choose from. Click on OK once selected.



Some of the categories have two sets of symbols, one designed for single coloured print and the other for multi-coloured print.

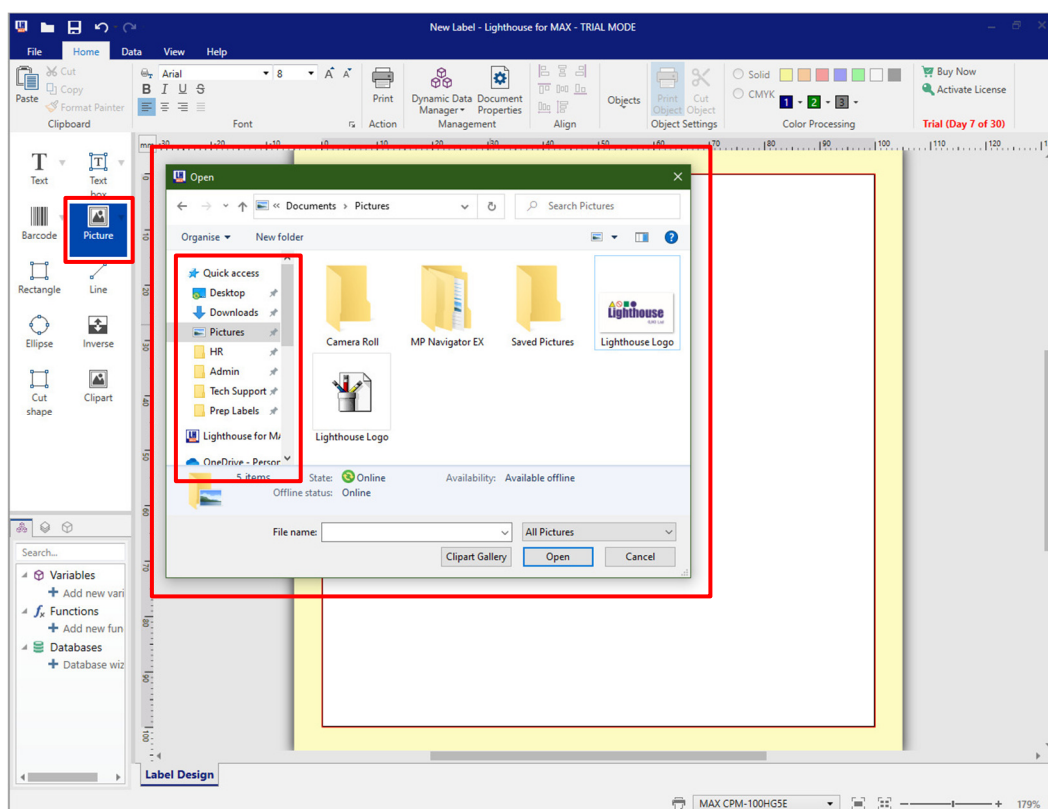
For the example below, the top symbols are designed for yellow and black ribbon printing onto white Vinyl and the bottom ones are for black ribbon printing onto yellow Vinyl.



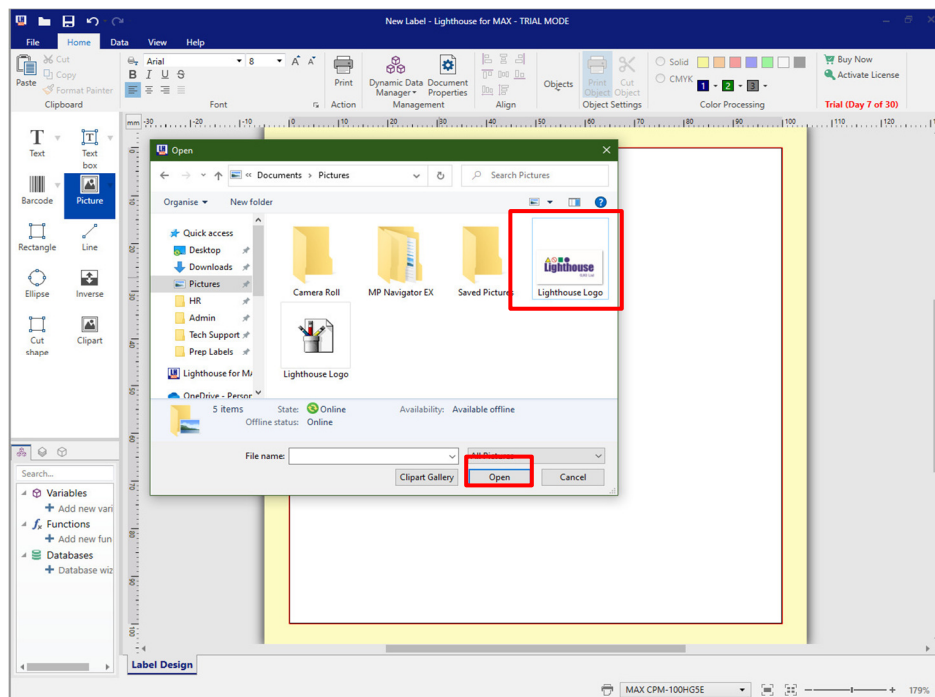
## Inserting Own Graphics

It is possible to insert graphics and logos into the software. With a label open, click on Picture on the left-hand toolbar and click on the label.

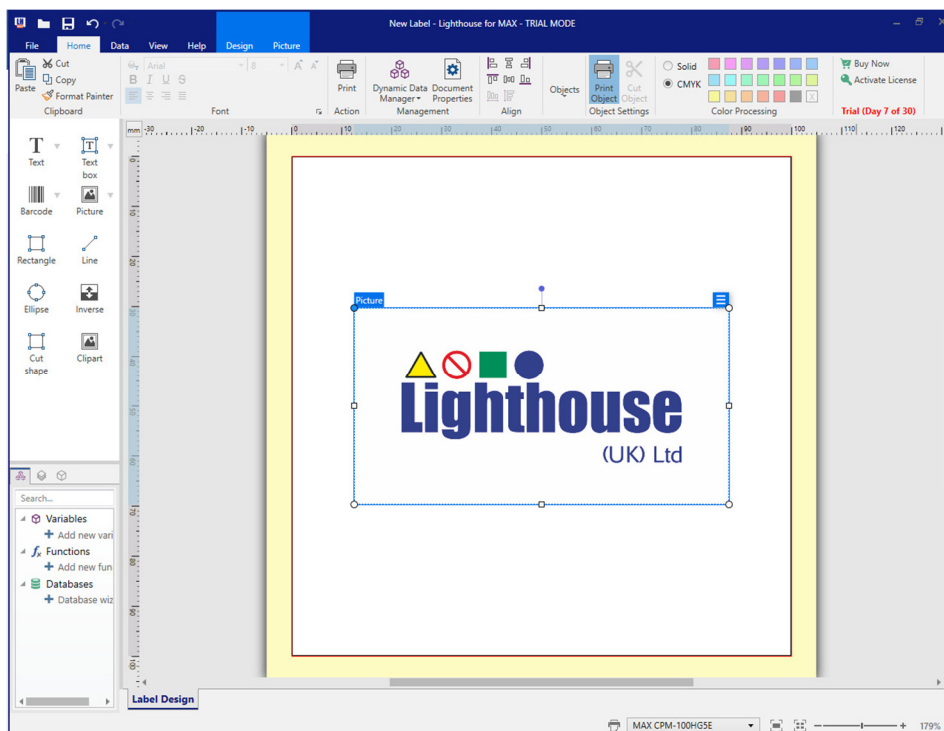
A browsing window will appear and you can then use this to navigate to the location of your image saved on your computer.



Once you have found the image you require, select it and click Open.



Your chosen image should then appear in your label where it can be resized and moved around as required.



The software looks for most graphic file types, i.e. .bmps, .gif, .jpg, .jpeg, .tif, .tiff, .png, .wmf, .emf, .pcx, etc.. However, .wmf is the recommended format.